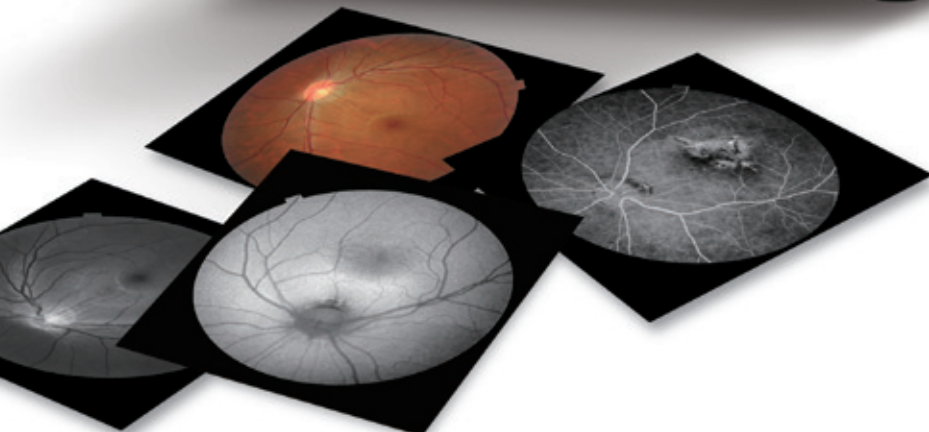


Non-Mydriatic Retinal Camera

TRC-NW8 *Series*



NEW COMBO RETINAL CAMERA TRC-NW8 SERIES



Features

- » Multi functional retinal camera
- » Lower flash intensity
- » Easy to use
- » Continuous shooting function
- » Auto focus & auto shoot
- » Auto small pupil detection
- » Compact design

CAPABILITIES

Impressive line-up of retinal imaging for all vision care professionals

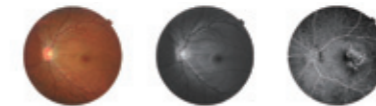
With TRC-NW8 series, it is possible to capture not only Non Mydriatic Colour / Red-free / Fluorescein Angiography, but also Fundus AutoFluorescein to answer all your many needs.

TRC-NW8 TRC-NW8



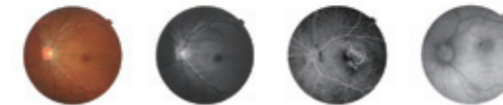
TRC-NW8 allows easy operation by Auto Shoot / Auto Focus function.

TRC-NW8F TRC-NW8F



TRC-NW8F allows patient-friendly Fluorescence Angiography photography by lower flash intensity.

TRC-NW8F plus TRC-NW8F plus



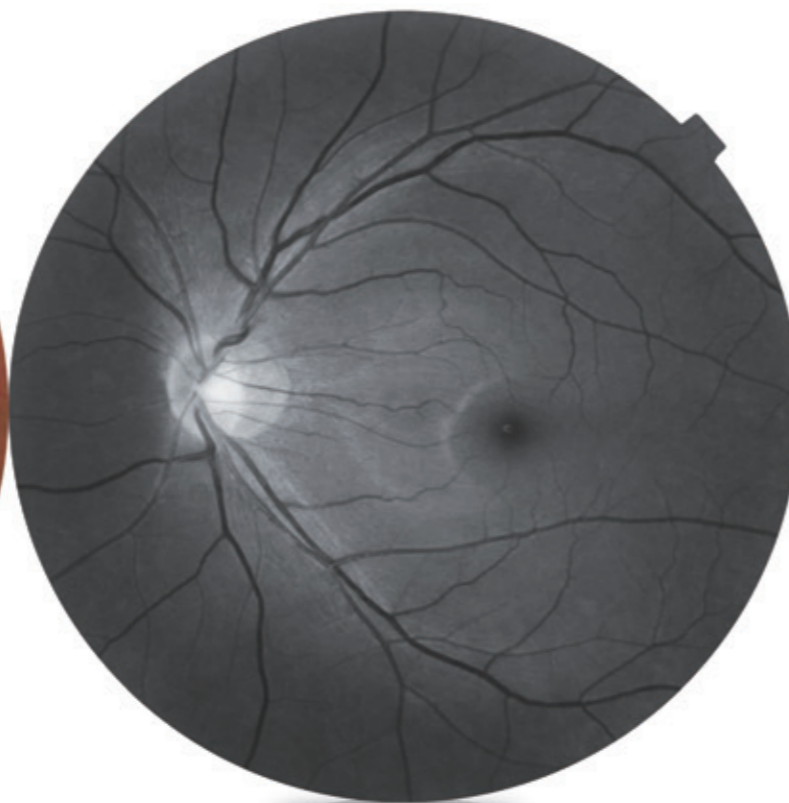
TRC-NW8F plus allows to capture multi photography such as Colour, Red-free**, Fluorescence Angiography, and AutoFluorescence photography.

* Image courtesy of Oogkliniek Deurne

** Digital Red-free only on TRC-NW8F plus



Colour



Red-free



Fluorescence Angiography



Fundus AutoFluorescence*

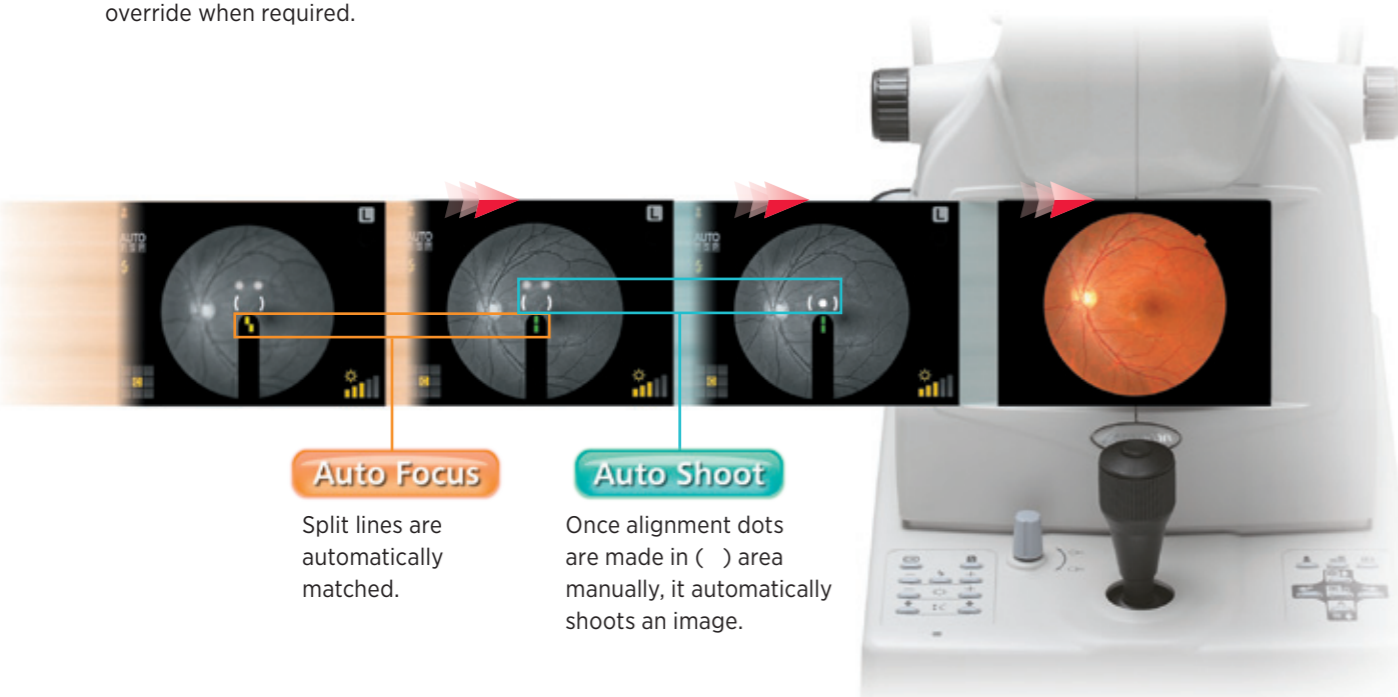
EASY TO USE



Auto focus & Auto shoot

TRC-NW8 TRC-NW8F TRC-NW8F plus

TRC-NW8 series is Topcon's multi-functional retinal camera which is focused on "simple operation". With our experience in the production of retinal cameras, we have been able to bring all of the benefits of our non mydriatic camera to this brand new multi functional camera. The ability of Auto Focus and Auto Shoot makes the operation of this camera extremely simple and user friendly. Still allowing manual override when required.



Auto Focus

Split lines are automatically matched.

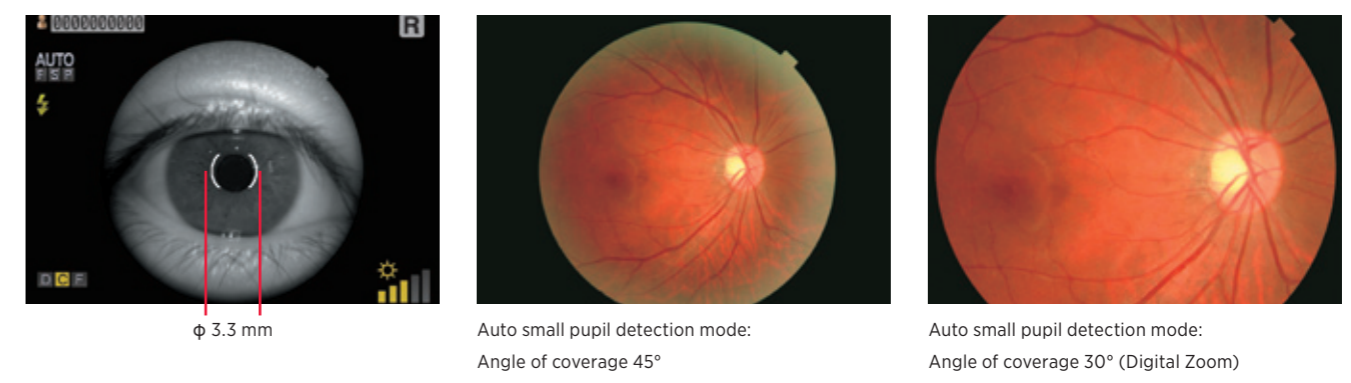
Auto Shoot

Once alignment dots are made in () area manually, it automatically shoots an image.

Auto small pupil detection

TRC-NW8 TRC-NW8F TRC-NW8F plus

Small pupils are a common phenomenon, and when mydriatic drops can not be used, the "Small Pupil" (min. ϕ 3.3 mm) option within the TRC-NW8 series, allows you to be able to get a shot.



ϕ 3.3 mm

Auto small pupil detection mode:
Angle of coverage 45°

Auto small pupil detection mode:
Angle of coverage 30° (Digital Zoom)

Low flash intensity

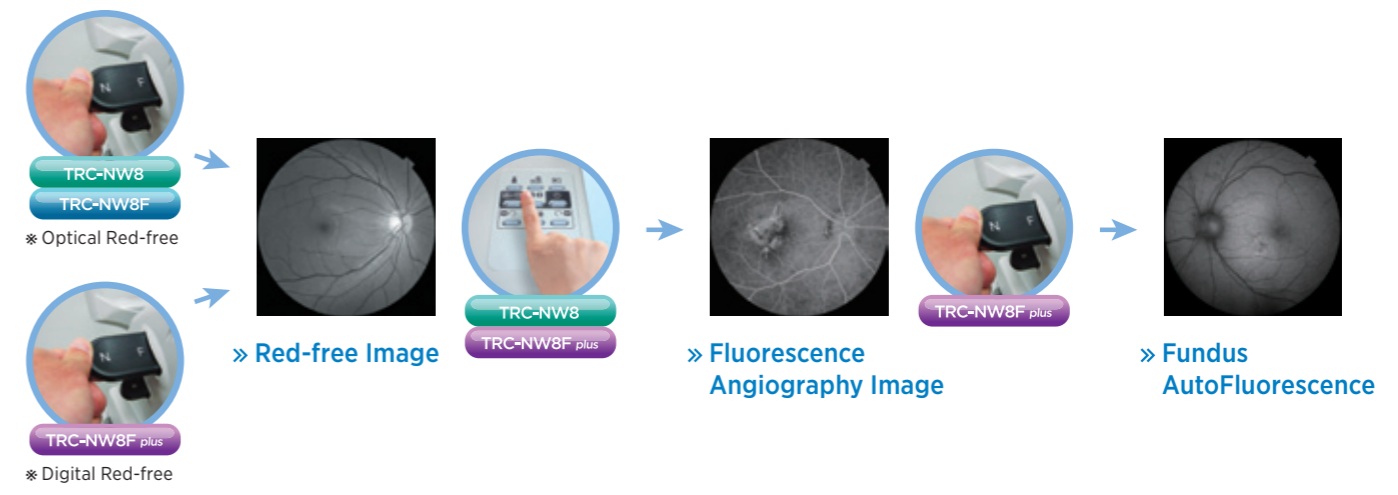
TRC-NW8 TRC-NW8F TRC-NW8F plus

Topcon has always endeavoured to keep flash levels as low as possible while at the same time ensuring that good exposed images are achieved. For FA photography, it can be performed by half the flash intensity compared to our conventional models.



One-touch operation

Red-free photography is easily switchable only the filter lever, and FA photography is also easily switchable only by pressing the mode switch. In case of TRC-NW8F plus model, simply pulling out the filter lever activates FAF photography mode.



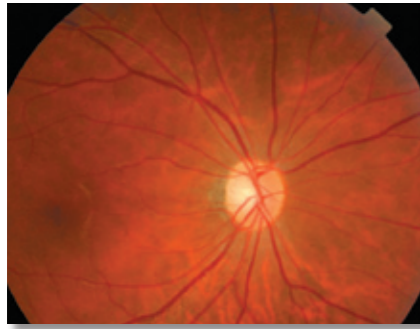
* Exclusively for colour, Red-free and FAF photography

HIGH QUALITY IMAGE

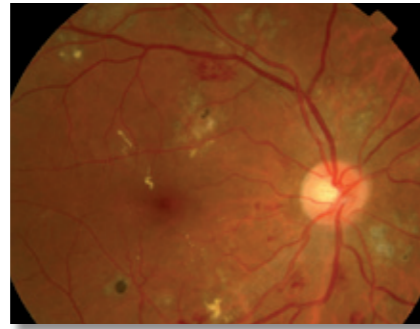
Quality of image is crucial as well as durability

TRC-NW8 TRC-NW8F TRC-NW8F plus

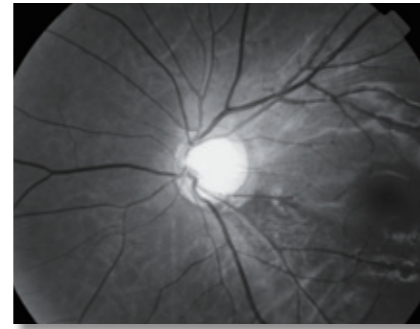
With these important requirements Topcon did not hesitate in deciding on which manufacturer it would use for its digital camera supplier. Nikon probably has the largest reputation when it comes to digital SLR cameras and is used by most of the worlds press for very good reason. Therefore you have no need to worry that your new TRC-NW8 series will ever be compromised by the digital SLR in terms of quality of images or durability.



Healthy eye



Diabetic retinopathy

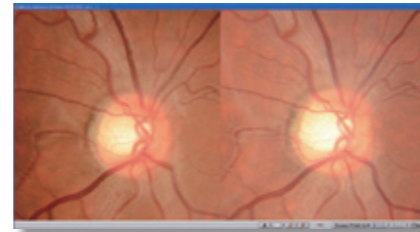


Glaucoma

Stereo photography

TRC-NW8 TRC-NW8F TRC-NW8F plus

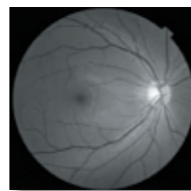
Today there is an increasing need for viewing stereo images and with the TRC-NW8 series camera this has been made very simple with the inclusion of a stereo switch. Once pressed the camera controls fixation to allow for two consecutive images to be captured with just the right amount of shift. These stereo pairs can then be viewed easily on Topcon's IMAGENet i-base software and allow for easier diagnosis.



True optical red-free photography

TRC-NW8 TRC-NW8F

Topcon has developed an innovative feature on TRC-NW8/TRC-NW8F: True optical Red-free capability with an actual Red-free filter. This feature allows for high resolution Red-free images acquisition.

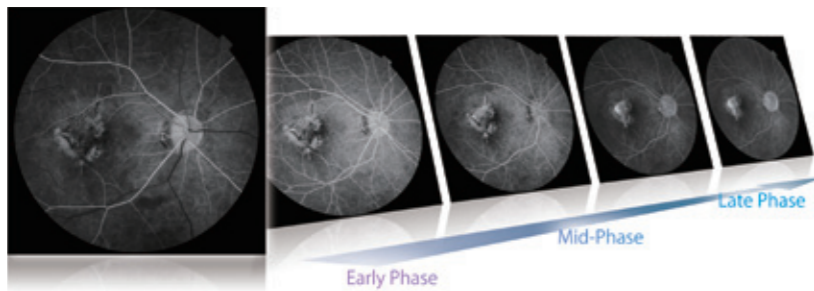


*TRC-NW8F plus :Digital Red-free

Fluorescence angiography photography

TRC-NW8F TRC-NW8F plus

Fluorescein angiography with TRC-NW8F/TRC-NW8F plus allows for much easier photographic sessions. With the lower flash levels used, patients will find the experience much more comfortable and as a consequence the operators are able to concentrate on getting the images they need.



Always high contrast images available

TRC-NW8F TRC-NW8F plus

Using the TRC-NW8F/TRC-NW8F plus of cameras always provides the operator with the option to use high contrast or a sharpening tool in order to aid diagnosis.



*Incorporated into Topcon optional IMAGENet i-base Software

Fundus AutoFluorescence Photography

TRC-NW8F plus

Use of the TRC-NW8F plus allows the operator to capture the AutoFluorescence of Lipofuscin and to show the sub macula area clearly using the in-built FAF filters. These filters have been specifically designed to avoid absorption of xanthophy. It is very useful to observe the change of chorioretinal atrophy in age-related macular degeneration..

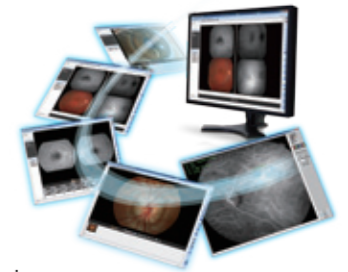


*Spaide FAF filter is produced under the supervision and authorization of Dr. Richard F. Spaide, Vitreous, Retina, Macula Consultants of New York, NY, USA.

IMAGING SYSTEM

IMAGENet i-base

IMAGENet i-base's cutting edge and comprehensive patient database management system features efficient data viewing, storage, analysis and flexible networking solutions. With its unique utilities, such as Auto Mosaic, stereo functionality, IMAGENet i-base software streamlines exam analysis and enhances communication with patient.

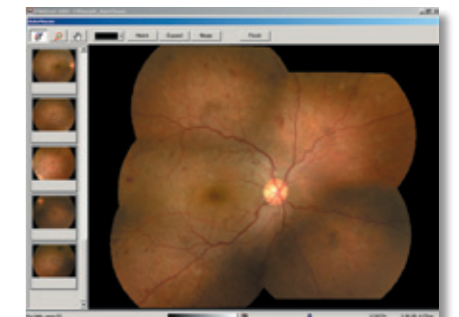


Simple & easy IMAGENet i-base software allows you to transfer and save retinal images with intuitive handling. Timer, R/L eye detection, angle and patient data will also be transferred with images.



Auto mosaic optional software

A panoramic view of the retina is seamlessly stitched together using Auto Mosaic software. Using a special algorithm to detect vessel edges, fields taken at random are automatically arranged in their correct positions without user intervention.



Specifications

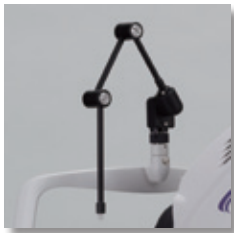
Angle of coverage	45°
Working distance	40.7 mm
Pupil diameter for photography	φ4.0mm or more φ3.3mm or more when the small pupil diaphragm is used
Type of photography	Colour photography, Red-free photography*, FA photography** and FAF photography***
Patient dioptre correction range	Without correction lens: -13D to +12D (where split lines are used) With minus correction lens: -33D to -12D With plus correction lens: +9D to +40D
Auxiliary function for photography	Auto focus function (Used only in the split line working range. This can be turned ON/OFF)
Fixation Target	Internal / External fixation target can be selected Internal fixation target Centre / Periphery Right / Left eye automatic detection Optional position presetting function
Base movement	Back & forth: 46 mm, Right & left: 100 mm, Up & down: 30 mm
Chinrest movement	67 mm
Power source	Frequency: 50/60 Hz Voltage: AC100-240V
Weight	23.5 kg (TRC-NW8/TRC-NW8F), 23.8 kg (TRC-NW8F plus)
Dimensions	274(W) X 508(D) X 536-566(H) mm
Power consumptions	400VA (Maximum), 100VA (Normal)

*TRC-NW8F plus model: Digital Red-free

**Only for TRC-NW8F and TRC-NW8F plus models

***Only for TRC-NW8F plus model

Optional Accessory



External Fixation Target



TOPCON CORPORATION

TOPCON CORPORATION

IMPORTANT

Subject to change in design and/or specifications without advanced notice.

In order to obtain the best results with this instrument, please be sure to review all user instructions prior to operation.

Topcon Europe Medical B.V.

Essebaan 11; 2908 LJ Capelle a/d IJssel; P.O. Box 145;
2900 AC Capelle a/d IJssel; The Netherlands
Phone: +31-(0)10-4585077; Fax: +31-(0)10-4585045
E-mail: medical@topcon.eu; www.topcon-medical.eu

Topcon Danmark

Praestemarksvej 25; 4000 Roskilde, Danmark
Phone: +45-46-327500; Fax: +45-46-327555
E-mail: info@topcondanmark.dk
www.topcondanmark.dk

Topcon Scandinavia A.B.

Neongatan 2; P.O. Box 25; 43151 Mölndal, Sweden
Phone: +46-(0)31-7109200; Fax: +46-(0)31-7109249
E-mail: medical@topcon.se; www.topcon.se

Topcon España S.A.

HEAD OFFICE; Frederic Mompou, 4;
08960 Sant Just Desvern; Barcelona, Spain
Phone: +34-93-4734057; Fax: +34-93-4733932
E-mail: medica@topcon.es; www.topcon.es

Topcon Italy

Viale dell'Industria 60;
20037 Paderno Dugnano, (MI) Italy
Phone: +39-02-9186671; Fax: +39-02-91081091
E-mail: topconitaly@tiscali.it; www.topcon.it

Topcon S.A.R.L.

HEAD OFFICE; 89, rue de Paris; 92585 Clichy, France
Phone: +33-(0)1-41069494; Fax: +33-(0)1-47390251
E-mail: topcon@topcon.fr; www.topcon.fr

Topcon Deutschland GmbH

Hanns-Martin-Schleyer Strasse 41;
D-47877 Willich, Germany
Phone: (+49) 2154-885-0; Fax: (+49) 2154-885-177
E-mail: med@topcon.de; www.topcon.de

Topcon Portugal

Rua da Forte, 6-6A, L-0.22; 2790-072
Carnaxide; Portugal
Phone: +351-210-994626; Fax: +351-210-938786
www.topcon.pt

Topcon Polska Sp. z o.o.

ul. Warszawska 23; 42-470 Siewierz; Poland
Phone: +48-(0)32-670-50-45; Fax: +48-(0)32-671-34-05
www.topcon-polska.pl

Topcon (Great Britain) Ltd.

Topcon House; Kennet Side; Bone Lane; Newbury
Berkshire RG14 5PX; United Kingdom
Phone: +44-(0)1635-551120; Fax: +44-(0)1635-551170
E-mail: medical@topcon.co.uk; www.topcon.co.uk

Topcon Ireland

Unit 276, Blanchardstown; Corporate Park 2
Ballycoolin; Dublin 15, Ireland
Phone: +353-18975900; Fax: +353-18293915
E-mail: medical@topcon.ie; www.topcon.ie